

Key

Demolition

Excavation (Refer to structural & services eng. information)

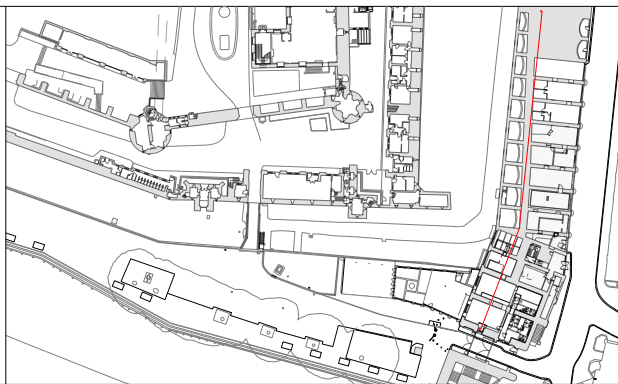
Removal of structural slab/ roof (in plan) or wall (in elevation)

Remove and retain for re-installment

BWIC in wall

BWIC in slab

Strip out works
(By others, not included in main works)



General Notes:

To be read in conjunction with Service Engineer, Structural Engineers and Heritage Architects information.

Drawings are based on survey data and may not accurately represent what is physically present.

All areas and methodologies are subject to full condition survey following strip out.

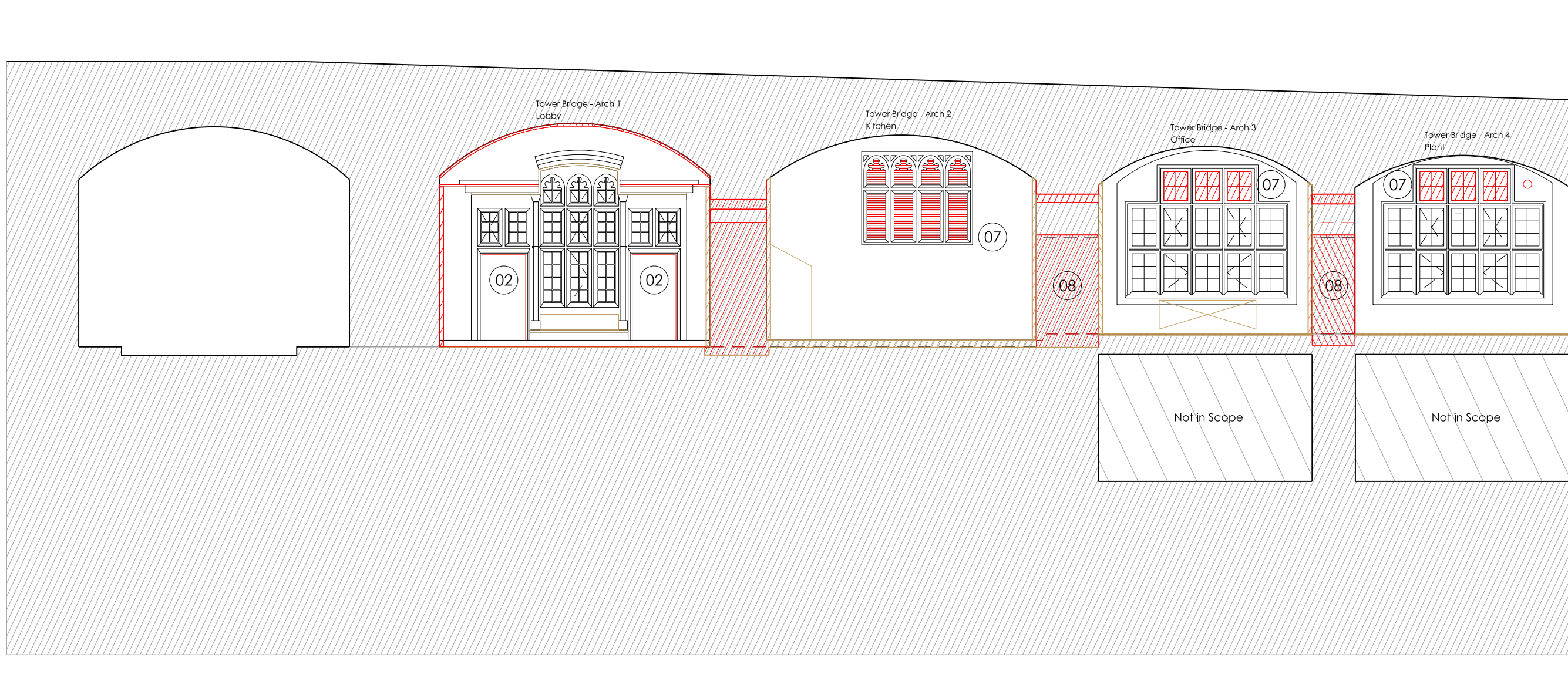
All demolition and proposed works are to be undertaken in adherence to SKC conditions and Listed Building Consent conditions.

0 1 5 10m

Jamie Fobert
— Architects
Rochelle, 22 Club Row
London E2 7EY
T: +44 (0) 207 553 6560
mail@jamiefobertarchitects.com

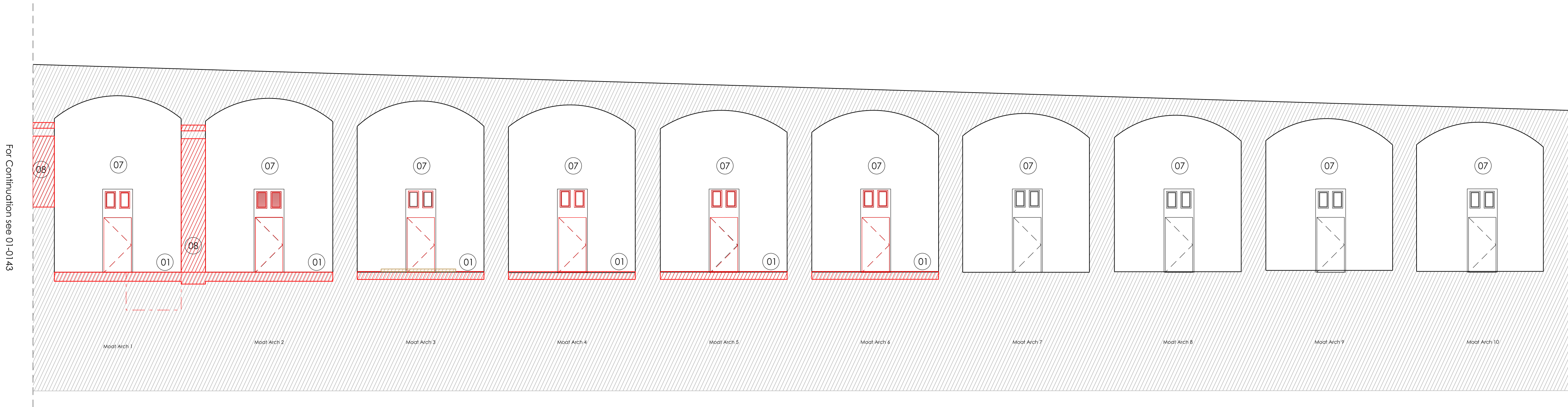
Copyright of Jamie Fobert Architects Ltd 2023

Unless indicated below, this drawing is for information only. Do not scale. Use figured dimensions only. All dimensions to be checked on site.			Project	The Tower of London
Issue/Revision	Date	Rev	Subject	Reveller Demolition Section HH
Stage 4A	17 04 25	A	Scale	1:100
Stage 4	18 07 25	B	Original Size	A1
Tender Draft	24 10 25	C	Date	03 12 24
			Drawing No.	TOL JFA-01-ZZ-DW-A-0143



01
0143

Section HH
South



02
0143

Section HH
North

Key

To be read in conjunction with Heritage Architects information. For conservation repair works refer to Heritage Architects information.

- 01
- Excavation for construction of RC slab / lift pit. To Structural Engineer's specification
- 02
- Careful removal of steel portal frame subject to investigations by Structural Engineer and Heritage Architect
- 03
- Careful removal and storing of railings, coping stone and cannon
- 04
- Removal of sentry box and stair

- 05
- Careful removal and storing of timber cladding
- 06
- Trimming of timber joists between steels. To Structural Engineers scope.
- 07
- Alterations to existing openings to include careful removal of grilles/ glazing/ window frames/ doors. To Heritage Architect's scope and specification
- 08
- Alterations to existing fabric to make new structural opening
- 09
- Alterations to roof include careful removal of rooflight and associated waterproofing
- 10
- Excavation for new service trench. To Service Engineer and Civil Engineers information.
- 11
- Careful removal of external wall and alteration of structure
- 12
- Excavation for steel beam foundations and piling to support new stair and ramp
- 13
- Removal of glazed door / window
- 14
- Alteration of existing external surface level. Exact scope to be confirmed
- 15
- Careful removal of decorative shell topping, filler layer and drainage board
- 16
- Removal of fall arrest system